



**Tender No : 129/2017**

**Tender Name:**

**Vegetation Management for Distribution  
Power Lines in the Western division**

**Tender No**

**: 129/2017**

**Tender Name: Vegetation Management for Distribution Power Lines in the Western division**

**Bidder's Name:**

**Bidders Address:**

**Bidder's TelephoneNumbers:**

**Bidder's Email Address:**

Fiji Electricity Authority is seeking proposals from FEA Trained and Certified Vegetation Management Contractors to carry out pole base and vegetation management clearing along the Distribution lines and part of Transmission lines (33kV, 11kV, 415V, 240V) in Nadi, Ba, Tavua, Nadarivatu, Maro, Sigatoka & Maro areas as specified in the tables below.

**Nadi, Ba, Tavua and Nadarivatu Areas**

<b>Feeder</b>	<b>Isolation Points</b>	<b>Area</b>	<b>Lump Sum Price for pole base and vegetation management</b>	<b>Expected date of completion</b>
Ba Town	3C10-S397-S248-S344-I702-I312  main line including HV and LV tee-offs	Whole of Ba Town, Elevuka, Whole of Varadoli, Varadoli Cemetery Road, Part of Navoli Road, Part of Koula Road, Part of Kings Road from Ba Town to Wailailai, Part of Wailailai, Itatoko		
	I312-I702-S230  main line including HV and LV tee-offs	Part of Kings Road from Wailailai to Bilolo, Part of Wailailai Area, Whole of Votua Road, Votua Village, Nawaqarua, Natutu, Vadravadra Village, Khalsa Road, Lavuci, Natalecake Village, Whole of Vatiyaka Road, Waivuka, Part of Navoli Road, Part of Koula Road Sorokoba, Sasa Village, Whole of Varavu, Whole of Nadari Road, Part of Bilolo Area		
Koronubu	3F10-S248-S371-S344-R211  main line including HV and LV tee-offs	Part of Koronubu Road, Whole of Vaqia Road, Part of Vunisamaloa, Part of Rarawai, Naidrodro, Lane 25, Vaqia Cemetery Road, Nadrou, Whole of Vatusui, Kumkum, Chinakoti, Field 28		
	R211-EOL S236- EOL main line including HV and LV tee-offs	Part of Koronubu Road, Whole of Korovuto, Part of Rarawai, Part of Vunisamaloa, Koronubu Tramline, Tevoro Lane, Whole of Benai, Namau, Whole of Qerelevu Road, Nakavika, Naboutolu Whole of Veisaru, Bulabula, Busabusa, Solosolo, Namada		
Balevuto	3G10-S224-S388-S371-F5599  main line including HV and LV tee-offs	Part of Moto Road, Vatulaulau Stage 1 & 2, Tarivo Road, Nasolo, Talaiya, Waiwai Road, Yaloku, Nanuku, Marinitawa		
	F5599- EOL main line including HV and LV tee-offs	Tabataba, Nukuloa Back Road, Nukuloa, Whole of Balevuto Road, Balevuto Village, Babriban, Vatawai, Whole of Toge Road, Toge Village		

Tavua Town	3G10-S374-S232-S368-S233  main line including HV and LV tee-offs	Whole of Tavua Town, Part of Vatukoula Road, Tavua Village, PWD Depot-Tavua, Tavua Hospital, Tavua Reservoir, Tavua Police Station, Tavua Fire Station, LTA-Tavua, Mobil Service Station-Tavua, Tavua, Tavua Hotel, Tavua Club, Garvey Park-Tavua, Whole of Leka Street, Whole of Tabavu Street, Whole of Nasivi Street, Whole of Loloma Street, Whole of Kavika Street, Whole of Vatia Street, Whole of Nabuna		
	S230-S233  main line including HV and LV tee-offs	Part of Kings Road from Bilolo to Tavua Town, Part of Bilolo, Bilolo Road, Lutua Road, Natunuku, Vatutavui, Lausa, Maqere, Vatia Road, Qalela Road, Matacawa Road, Tagitagi, Lubulubu Road, Waikona, Natawa, Matalevu Road, Nadolodolo Vanukuiri, Yasiyasi Road, Yasiyasi Area, Part of Tavua Town		
Tavua Interconnector	3J10-S232-S336-S342  main line including HV and LV tee-offs	Part of Kings Road from Tavua Town to Yaqara, Nabuna, Mataniwai, Korovou Cemetery, Rabulu Road, Rabulu Village		
	S342-S289-I382  main line including HV and LV tee-offs	Whole of Yaqara Area, Whole of Naseyani Rd, Yaqara Communication Site, Whole of Naseyani Village, Whole of Nananu Village, Whole of Vitivanua Village, Whole of Drauniivi Village, Drauniivi School, Drauniivi Fiji Pine Station, Drauniivi Settlement, Whole of Togovere Village, Whole of Togovere Area, Whole of Caboni Area, Natokita Settlement, Golden Point Resort, Whole of Tuidreke Area, Wairuku Area, Wairuku School, Wairuku Muslim School, Sugar Research Institute, Vitawa Area, Vitawa Village, Vitawa settlement, Narewa Village, Narewa areas, Naivuvuni Village, FPTL Station, Tabuka Area, Vunitogoloa Village, Vunitogoloa Nursing Station, Nanuku area, Nanuku FSC compound, Nanuku Primary Sch, Navutu Fijian Sch, Ducui Rd, Al-madina Rd.		
	F5087-EOL  main line including HV and LV tee-offs	Part of Nadarivatu Road, Whole of Korovou Village, Part of Korovou, Area, Whole of Balata area, Balata High School, Balata Indian School, Whole of Draumasi Road, Part of Lakalaka, Whole of Naim Road, Whole of Davota area, Davota Indian School, Whole of Rakavidi Road. Whole of Malele Road, Vodafone Repeater Station – Malele		
Nadarivatu	3C10-S368-F5096  main line including HV and LV tee-offs	Part of Vatukoula Road, Belavu Area, Whole of Toko Area, Toko Bhartiya School Area, Matanagata Back Road, Whole of Nasivi Area, Nasivi Pumping Station, Korowere Area, Whole of Vuqele Area, Vuqele Artesian Mineral Water Factory, Nadelei, Koro #1, Koro #2		

	F5096-I562-F5569-EOL main line including HV and LV tee-offs	Whole of Nadarivatu Area, Nadarivatu Government Station, Nadarivatu Health Centre, & Police Post, Koro-O Area, TFL Tower, Digicel Tower, Vodafone Tower, FBCL Tower, Southridge, Nadarivatu Secondary School, EGM Quarters, Taunabe Village, Naiyaca Village, Lewa Primary School, Lewa Village, Marou Settlement, Lewavou Settlement, FEA Nadarivatu Campsite, Korovou Weir, Nadarivatu FEA Repeater Station, Votualevu Settlement, Buyabuya Village, Portal House, Nagatagata Village, Savatu Primary School, FEA Switchyard, Drala Settlement, Koro Village,		
	I562-EOL main line including HV and LV tee-offs	Nadala, Dromodromo Settlement, Navai Village, Nabesa Village, Korosoi Settlement, Waimoqi Settlement, Yauyau Settlement, Saroni Farm, Wainiqia Settlement, Tavorase Settlement, Lovo Settlement, Waililai Settlement Waidradra Settlement, Navosalilai Settlement, Vatusogo Settlement, Nadrano Settlement, Naga Village, Raravou Village, Nadrau Village, Nabawaqa Settlement		
Mahajibhai	3K10-S287-I447-EOL (Fantasy) main line including HV and LV tee-offs	Whole of Martintar, Northern Press Road, Mahajibhai complex, Dominion Hotel, Gray road, Ragg Street, Zahoor Street, Haji Street, Wailoaloa Road, Wailoaloa area, Nadi Bay Road, Wasawasa Road, Keneddy Avenue, Enamanu Road, Part of Navakai Road, Saunaka Village, Fantasy Island,		
	I447-I290-I404-I475 main line including HV and LV tee-offs	Nakavu village, Navakai, part of Keneddy Ave, Narewa village, Navakai pumping and sewerage, Namotomoto village, Narewa road		
Lavusa	3G10-S415-S363-F5471-S247 main line including HV and LV tee-offs	Korociri area, Whole of Nawaka, Whole of Bua Sala Road, Part of Togomasi, Whole of Kerebula, Whole of Taci settlement, Whole of Vatutu village, Reservoir Road, Whole of AH Khan Road		
	S247-S416-I544 main line including HV and LV tee-offs	Whole of Alladata Road, Whole of Solovi Road, Whole of Nadi Back Road, Whole of Nausori Highland, Part of Meigunyah, Whole of Mulomulo Road		
Nawai	S282-S284 main line including HV and LV tee- offs	Malolo, Tunalia, Nacovi, Arolevu, Sonaisali		
Momi	S284-S259 main line including HV and LV tee-offs	Part of Queens Road from Momi Junction to Nawaicoba, Nabila Settlement Nawaicoba Police Post, Whole of Nawai, Whole of Nalovo, Whole of Uciwai, Whole of Malamala, Yako		

Votualevu	3J10-Votualevu Sub-SM Delana, Tokatoka Ramada, I323, F5530, S370 main line including HV and LV tee-offs	Whole of Legalega, Westfield Subdivision, Rams Estate Subdivision, Nadi Methodist Division, Legalega Agriculture Station, Vunaniu Subdivision, NDL Nursery, Mushroom Farm, whole of Votualevu, Matavolivoli, Comville Subdivision, Alim Begg S/D, Beverley Hills, Whole of Votualevu-Naboutini Rd, Black Rock Army Camp, Fairdeal, Whole of Cemetery Rd, Savalau, Holika Rd, Whole of Old Rice Mill Rd, Part of Savalau, Part of Holika Rd, Cam Pacific Limited, Votualevu Public School, Votualevu Reservoir, Heavens Heights Subdivision, Comville Estate, Whole Of Careras, British American Tobacco Factory, Tadra Flowers, Whole Of Tadra Flowers Road, Part Of Nasau, Votualevu Pumping Station, Vodafone Repeater, Digicel Repeater, Whole Of Rice Mill Road, Part Of Holika Road, Part Nasau, Part of Cemetery Road, Part Of Valenimasima Road, Fairdeal, Votualevu Road, Savunawai stage 1& 2, Kartaram, Novotel hotel, Tanoa International Hotel, Courts Fiji, Tanoa Apartment, Carerras Road, Malawai		
Vuda High Security	3B10-S239-I222 main line including HV and LV tee-offs	Vuda Back Road, Vuda Pigerry, Lomolomo, Barara flats, Natalau Junction, Sleeping giant, Vaivai, bandrama, MT khan Sabeto Hill		
	I222-I323-S243- EOL(Nagado)-T2403 main line including HV and LV tee-offs	After Natalau Junction to Sabeto to Waimalika, Legalega industrial S/D, Matrix nadi airport, whole of Sabeto, Part of Masimasi, whole of Nagado		
	T2403-S243-T4046-S370 (SWER Line)	Part of Sabeto, Naboutini, Part of Masimasi, Keolaiya, Nadele		

## Maro, Sigatoka & Maro Areas

No.	FEEDER	HV ISOLATING POINTS	AREAS	Lump Sum Price for pole base and vegetation management	Expected date of completion
1	Momi (S341 TO S259)	S257, S258 & S259	SARIYAWA, MOMI SETTELMNT, MATAPO OFFICE MOMI, MOMI RESORT CONSTRUCTION SITE, HERBERT CONSTRUCTION SITE, NABILA , MOMI GUN SITE, BAVU VILLAGE, PART OF NAWAI SETTLEMENT,		
2	Old Queens Road (S341 TO S249)	S249, S250, S257	LOMAWAI VILLAGE, WAI DISTRICT SCHOOL, KUBUNA VILLAGE, LOMAWAI DIGICEL SITE, LOMAWAI VODAFONE SITE, NAMATA, NAMATA PRIMARY SCHOOL, NAMATA VODAFONE & DIGICEL SITE, NAMATA CATHOLIC MISSION , KOROKULA VILLAGE, TAU VILLAGE, TAU HEALTH CENTRE, WAIDA SETTLEMENT, SAVUSAVU, SEASHELL COVE RESORT		
3	MARO [S316 at Natadola Junction to S249 at Lomawai Village]	F5190, F5181, F5182, F5185, F5531, F5831, F5485, S315	KABISI, NAIKELI, NALELE, VAVANAQIRI VILLAGE, CIRIWAI, BATIRI VILLAGE, BATIRI SETTLEMENT, BATIRI PUBLIC SCHOOL, TOGOBULA VILLAGE, QOQO ISLAND RESORT, VUSAMA VILLAGE, LOMAWAI , LOMAWAI PRIMARY SCHOOL, LOMAWAI SECONDARY SCHOOL, KADAVU SETTLEMENT, FSC SECTOR OFFICE, LOMAWAI, CIRIWAI TOP, NAVUTU VILLAGE, LOMAWAI HEALTH CENTRE, LOMAWAI VILLAGE		
4	NATADOLA [S316 at Natadola junction - S406 at Natadola sub - S356 at Semo Hilltop]	I540, I466, F5189, I474, I422, F5188, F5239,	SEMO, NABOU, KABISI, EMURI , MARO, NALELE, CIRI, NAVISABASABA & NATADOLA AREAS		
5	SANASANA [S406 at Natadola sub - EOL]	I541, F5669, I481, F5678, F5815, F5803, F5662	VODAFONE, DIGICEL AND RESERVOIR SITE NATADOLA, NATADOLA WASTE WATER TREATMENT PLANT, SANASANA VILLAGE, NATADOLA WATER PUMPING STATION , NATADOLA GOLF CLUB HOUSE, MALOMALO SETTLEMENT, MALMALO PRIMARY SCHOOL, NAIDIRI SETTLEMNT, MALOMALO VILLAGE, NAIDIRI VILLAGE		
6	YANUCA [Stk depot - S356 at Semo Hilltop]	S301, F5152, F5153, F5523, F5376, F5594, F5154, S302, F5155, F5457, F5607, F5157, F5158, F5159, S303, S304, S305, F5162, F5267, F5691 AND F5492,	KOROMUMU, TULALEVU, KULUKULU, VUNAVUTU, NASA, VOLIVOLI, MATAQE, WAIBOGI, YADUA, MALAQEREQERE, NAVUEVU, TORE, SILA, NAQELEDAMU, CUVU, NAVOVO, RUKURUKULEVU, VAUA, NAIDIVI, FSC COMPOUND, NEWTOWN, HANAHANA, ULUISILA, TOGOVERE, NADROMAI, NADOLA, NAREWA, MUKA, NADAULAU, NAIDIRI AND TAGITAGI AREA		
7	SIGATOKA TOWN Depot - S396 at Tappoos - Sovi Bay]	I436, I347, I287, I279, S394, F5524, F5171, S309, F5541, F5172, F5405, F5406, I342, S310, F5175, F5494, F5637, F5499, F5524, F5460, F5610, F5693, F5694, I492 AND F5695	KOROMUMU, BARA, RAKIRAKILEVU, SIGATOKA AND YAVULO VILLAGES, LAWAQA, TILAVALEVU AND VUNATAVOU VILLAGES, NAVOVO SUBDIVISION, PART OF SIGATOKA TOWN AREA, LASELASE AND NAYAWA VILLAGES, OLOOLO, OLOSARA, KOROTOGO, MALEVU, SOVI BAY AREAS		
8	VALLEY ROAD [S396 at Tappoos - Keiyasi]	S396, R217, I460, F5166, I461, I511, F5338, F5346, F5341, F5393, F5448, F5375, R228, I284, F5374, F5793, F5833, F5169, F5494, F5499, I285, F5426, F5769, F5596, I286, F5198, F5609, F5771, F5612, F5364, F5483, F5788, F5550, I434, F5602, F5615, I454, F5664, F5665, S412, F5794, F5812, F5795, S413, S418, S423	PART OF SIGATOKA TOWN, TOPEND, KEDRAKULU, LAWAI, NAKABUTA VILLAGE, NASAU, KOROKORO, NACOCOLEVU RESEARCH STATION, NAWAMAGI VILLAGE, NARATA VILLAGE, NADRALA VILLAGE, YALAVA, SAMUSAMU, NARORO, RASIKULUKU, BARARA, NADURI VILLAGE, KAVANAGASAU, NADRALA, YALASA, NACEVA, QEREQERE VILLAGE, RAIWAQA VILLAGE, LOKUYA, BILALEVU, MAHEN EXPORT, NASOVATAVA, NABITU, NAREWA VILLAGE, WAICOBASCHOOL, NARATA VILLAGE, RARARUA VILLAGE, NABAKA, SIMINILAYA, TUBAIRATA VILLAGE, RAUNITOGO, NUKUCIRI, VUNAQURO VILLAGE, NAQALIMARE, NAHAU VILLAGE, TOGA VILLAGE, SAUTABU VILLAGE, NAVEYAGO VILLAGE, RARABAHAGA, NALEBALEBA VILLAGE, TUVU SHOPPING CENTER, TOGA VILLAGE, BEMANA VILLAGE, MATOVO WATER TREATMENT STATION, DREKE VILLAGE & KEIYASI GOVERNMENT STATION		
9	NAVITI [Korolevu Sub - Hideaway Resort]	F5204, F5657, F5630, F5667, F5206, S417, VCB 3G10	VOTUA HOUSING, VOTUALAILAI VILLAGE, NAGASAU , MAUI BAY ESTATE, MUANIVUNISE & TAQAQE TFL & VODAFONE KOROLEVU, NAVITI RESORT, DIGICEL , VOTUALAILAI, VALASE RESORT, TAQAQE FORESTRY , HIDE-A-WAY RESORT, VODAFONE & DIGICEL HIDE-A-WAY		
10	KOROLEVU [Korolevu sub - Qalito Settlemet - Votua Village]	F5178, VCB 3B10	KOROLEVU, QALITO, JAFFAU & VOTUA HOUSING, KOROLEVU SBD, KOROLEVU HEALTH CENTRE, KOROLEVU POLICE POST, LAGOON BEACH RESORT AND VILISITE'S RESTAURANT		
11	HYATT [Korolevu sub - R023 at Matanipusi Hilltop]	F5253, F9055, F5574, F5575, F5576, I439, I510, S381	MATANIPUSI HILL, NAVUTA HILL, NAMAQUAQUA, NABUKELEVU, MATEIKADAWA, NABUKELEVU, VUNAYAWA, NABOUTINI, NAVUTULEVU, NAKARA, NAKOROVOU, NAMATAKULA, NAVOLA, VOLIVOLI, BILA & BIAUSEVU, CRUSOE RETREAT RESORT, CORAL VILLAGE RESORT, VODAFONE NAMAQUAQUA, VODAFONE MANGO BAY, MANGO BAY RESORT, DIGICEL NAMATAKULA, BEACH HOUSE, NASIKAWA VISION COLLEGE, WARWICK RESORT AND VODAFONE & DIGICEL WARWICK.		
12	NACOCOLEVU - KOROLEVU 33KV TEE-OFFS [Sovi Bay, Vatukarasa, Balenabele, Koroinasau, Tabua Sands, Namada Village]	4T9906, F5506, F5814 AND F5611, 4F9904 AND F5066	SOVI BAY, VATUKARASA, BALENABELO AND KOROINASAU , TAMBUA SANDS & NAMADA VILLAGE		
13	QELELOA - STK 33KV T/OFF [Nabou and Waibogij]	F5327, F5197, 4T9902	NABOU PINE STATION & KAVUKAVU REPEATER STATION AND WAIBOGI SETTLEMENT		

By providing the above information, FEA does not take liability of the actual conditions in field. The bidders / contractors shall verify the actual conditions and the geographic terrain during the site visits. The bidders shall self-evaluate the realities in the field and submit firm prices. Variation will not be allowed as part of this contract.

Bidders are to submit a breakdown of prices and expected date of completion of each location specified as per the tables included above in this tender document.

1. **Health and Safety Plan Requirements.**

It is mandatory for the bidders to complete and submit a copy of the attached "FEA Contractor Health and Safety Plan Template (Document No. HSE41C01, HSE41C02, HSE41C03, HSE41C04, HSE41C05, HSE41C11, HSE41C12, HSE41C13)". **Failure to submit completed attached HSE documents shall possibly disqualify the bid.** An electronic copy (word document format) shall be made available upon the bidder's request and can be provided by email. Interested bidders may request this document from FEA personnel conducting the site visit.

- **Bidders to include photocopies of FEA issued ID cards for workers/personnel who have attended the FEA VM Training Policy and Refresher Course**

2. **Site Visit Requirements.**

**The site visit requirements for this tender are compulsory and attendance shall be recorded. Interested bidders shall provide their Transport for site visits to these feeders.**

**SITE INSPECTION DATE & TIME:**

All interested bidders to meet at Navutu depot at 9am.

- Wednesday/Thursday 14-15 June (Ba Town, Balevuto)
- Friday 16 June (Koronubu)
- Monday/Tuesday 19-20 June (Tavua Town and Tavua Interconnector)
- Wednesday 21 June (Nadarivatu)
- Thursday/Friday 22-23 June (Vuda High Security, Votualevu)
- Monday/Tuesday 26-27 June (Lavusa, Mahajibhai)
- Wednesday/Thursday 28-29 June (Momi, Nawai, Qeleloa)

**All interested bidders to meet at Sigatoka depot at 9am.**

- Friday 30 June (Maro/Natadola)
- Monday/Tuesday 03-04 July (Sanasana/Yanuca)
- Wednesday/Thursday 05-06 July (Sigatoka Town/Valley Rd)
- Friday/Monday 07 & 10 July (Naviti, Korolevu, Hyatt)
- Tuesday/Wednesday 11-12 July (Nacolevu, Korolevu)

Interested Bidders are to meet with FEA's Technical Officers for site inspection at Navutu Depot, Lautoka and Sigatoka depot, Sigatoka.

1. Isimeli Ratukalou - 9999245,
2. Mosese Ramanaitaga – 9999261 and;
3. Sarafat Ali - 9999298

### **3. Lodgment of Tenders in sealed envelopes marked**

**It is mandatory for Bidder's to submit two (2) hard copies of the tender bids in sealed envelope shall be deposited in the tender box located at the Supply Chain Office at the FEA Head Office, 2 Marlow Street, Suva, Fiji.**

**Courier charges for delivery of Tender Documents must be paid by the bidders.**

**This tender closes at 4:00pm, on Wednesday 19<sup>th</sup> July, 2017.**

Each tender shall be sealed in an envelope with the envelope bearing only the following marking:

**Tender- MR 129/2017 – Vegetation Management for Distribution Lines in the Western Division**

The Secretary, Tender Committee  
Fiji Electricity Authority  
Supply Chain Office  
Private Mail Bag, Suva

**It must also indicate the name and address of the tenderer on the reverse of the envelope.**

**All late tenders, unmarked Envelopes and envelopes without bidder's name and address on the reverse of the envelope will not be accepted.**

For further information or clarification please contact our Supply Chain Office on phone **(+679) 3224360** or **(+679) 9991587**.



#### **4. SCOPE OF WORKS – Vegetation Management**

4.1. **Pole base clearing** for wooden poles only and all creepers, grass from each pole and ground/fly stay wire base **2m radius around each pole**.

4.2 **Vegetation clearing** shall be carried out within 30m of Fiji Electricity Authority (FEA) power lines, and any other trees specifically identified during the site visit.

**Vegetation Management will be done in 3 rounds. One round of cutting will be a period of 4 months;**

- a. 1<sup>st</sup> round – 10mtr cleared from either side of line with all undergrowth – 1<sup>st</sup> 4 months
- b. 2<sup>nd</sup> round – 20mtr cleared from either side of line with all undergrowth and as where practicable – 2<sup>nd</sup> 4 months
- c. 3<sup>rd</sup> round – 30mtr cleared from either side of line with all undergrowth and as where practicable – 3<sup>rd</sup> 4 months

4.3 Clear ALL vegetation **growth by the root/ground**.

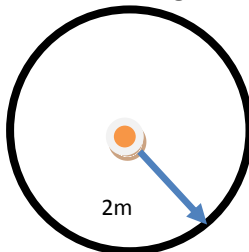
4.4 Clearing of vegetation debris and transportation of debris to contractor's disposal site

4.5 All works shall be supervised and inspected by FEA.

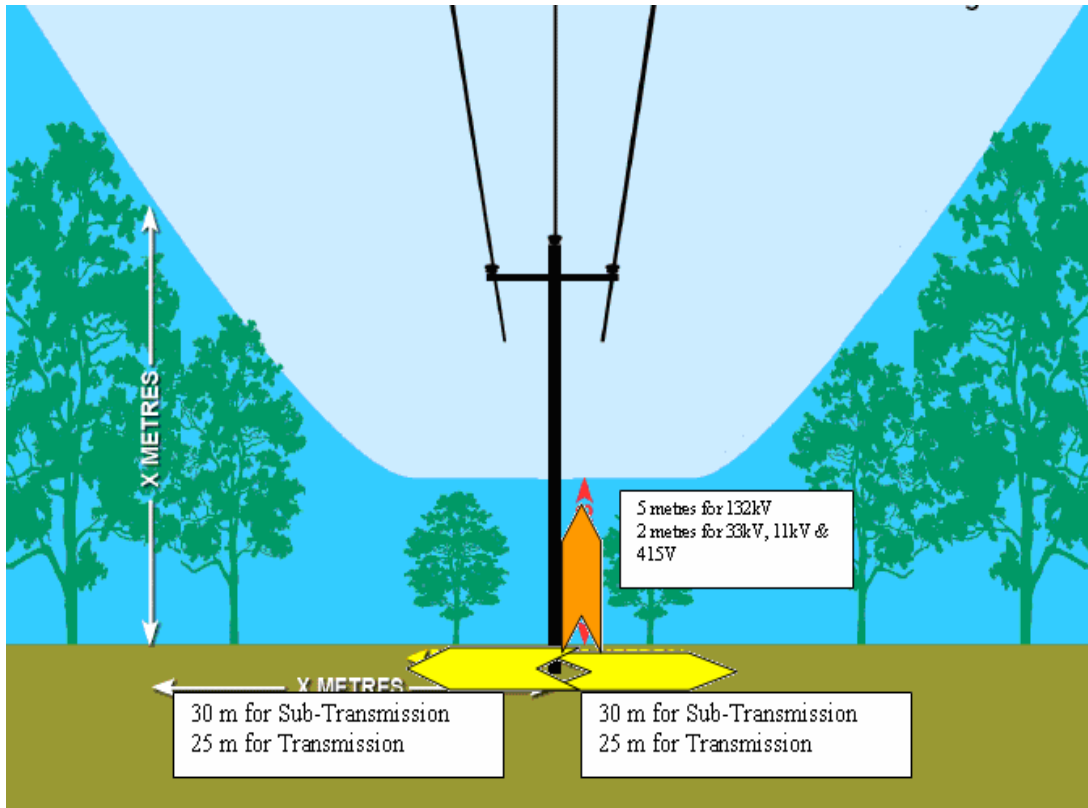
4.6 Report on any landslide area for slope stability.

4.7 Contractor shall provide machinery such as cherry picker and dump trucks for cutting and clearing of vegetation respectively. The contractor shall bear the cost of machinery.

#### **Pole Base Clearing**



## Vegetation Clearing



## 5. Commencement and Completion of Work

- a) Latest date for commencement of the works: 7 days from issue of LPO.
- b) Date for final completion of the works: **12 months** from issue of LPO.

For the purpose of supervising the contract on behalf of the Authority, references in the General Conditions to the Authority shall include the Unit Leader Distribution West or his designated officer. The Project Engineer shall be the Distribution Engineer West and the Project Supervisors shall be the Technical Officers.

## 6. INSURANCE

- (a) Public Liability \$500,000.
- (b) Worker's Compensation \$250,000

The contractor shall indemnify FEA against any claims for liability, injuries, losses, damages etc that may arise during the execution of the works.

## 7. LIQUIDATED AND ASCERTAINED DAMAGES

Agreed liquidated damages shall be payable by the Contractor for failure to achieve the required **Time of Completion as per clause 5** or by any extended time allowed by the FEA. The Agreed liquidated damages will be \$200.00 per day of delay.

Any extension of time will be agreed upon by the Project Engineer and the Contractor. Such extension of time will be advised in writing and communicated to the Contractor by FEA.

## 8. DEFECTS LIABILITY PERIOD

Defect liability period shall be 6 months from the completion of the work.

## 9. RETENTION FUND

- |                                |     |
|--------------------------------|-----|
| (a) Limit of retention fund:   | Nil |
| (b) Nature of retention fund:  | N/A |
| (c) Release of retention fund: | N/A |

## 10. CONTRACTOR REQUIREMENTS

- a) **Tender Bid** – Contractor shall submit a firm bid clearly indicating a lump sum VIP price.
- b) **Site Visit** – Contractor shall participate in a site visit which is compulsory. Bids from tenderers who do not participate in the site visit shall be disqualified.
- c) **Standards** – All vegetation management work shall be in compliance with FEA Vegetation Management Policy.
- d) **Vegetation clearing** –. Vegetation, which at a mature height will exceed 2m in height and will be within falling distance from the FEA lines are to be removed. ***Vegetation debris shall be disposed off neatly. No debris shall be left by the roadside, or blocking drains.***
- e) The Contractor shall use machinery such as cherry picker at their own cost to clear the vegetation without FEA team dropping the overhead conductor.
- f) **Safety Plan** – The tender bid shall include a Safety Plan that will be evaluated by the FEA’s HSE Unit. Tender bids with incomplete, unacceptable, or without a Safety Plan will not be considered for award.
- g) **Safety Record** – Tender bid shall include a brief report on Safety performance over the last two years. The report shall include all incidents and accidents.
- h) **Sub-contracting** – Subcontracting shall not be permitted, except where this is specifically presented in the tender bid, and only upon approval by FEA. Subcontractors shall be required to fulfil all requirements as if they were the contractor.
- i) **Scope of works** - Work involved in this contract is broadly classified into two phases, and progress payments shall be processed accordingly.
  - i) Pole Base and Vegetation Clearing
  - ii) Disposal of vegetation debris
- i) **Contact** - Contractor shall have a valid postal address, Office phone/fax/e-mail contact. The company Director shall be available by mobile phone at any time.

j) **Work Program** - Contractor shall submit a work programme before starting of project. This shall be part of the contract. Work shall commence within seven (7) days after receiving an official FEA Local Purchase Order.

k) **Training** – Contractor shall ensure his employees have attended training on the following within the past 6 months :

- FEA Safety Manual Training
- FEA Vegetation Management Policy,

and records of this shall be submitted with the tender bid. In the event that the training has not been carried out, the Contractor shall ensure these training are carried **PRIOR** to induction for new project.

l) **Chainsaw Operator** – Contractor shall ensure that the project has one Certified Chainsaw Operator certified by the Department of Forests. Records of these personnel shall be submitted with the tender bid.

m) **Invoicing** – Contractor shall submit details of work completed to allow prompt approval of invoice.

n) **Safety Induction** - A Safety induction must be conducted before start of vegetation management work.

1. Contractor shall ensure that all employees who work on the project attend the Safety Induction. All contractor employees are to present a valid company ID card clearly showing a current photo, employee name, employee date of birth and employee job description.
2. Machines and equipment’s will be inspected – chainsaw, chainsaw chap, ropes, knives, axes. Earmuff
3. PPEs will be inspected – hard hat, safety boots, leather gloves, safety glass, overall

ii) **Instruction to Commence Work** - Contractor shall NOT commence work on site unless an “Instruction to Commence Work” has been received from the Project Engineer.

iii) **Signboards** - One signboard (6’X 4’) must be erected at the start of the works and one at the end of the works clearly stating :

<b>DANGER</b>
<b>PROJECT: VEGETATION MANAGEMENT– Vunidawa Feeder</b>
<b>CONTRACTOR: .....</b>
<b>VEGETATION MANAGEMENT WORK</b>

iv) **Accident Reporting** – All accidents and incidents shall be reported immediately to FEA using approved forms available in the FEA Safety Plan Template, or equivalent.

- v) **Project Updates** - Contractor shall meet with the Project Engineer and Project Supervisor on a weekly basis to discuss project progress and bottlenecks. These meetings shall be minuted for records, and circulated to the appropriate stakeholders.
- vi) **Tidiness** – The Contractor shall maintain the worksite in a neat and tidy condition.
- vii) **Consent for Vegetation clearing** – no vegetation shall be cleared unless specific instruction to do so has been received from the Project Supervisor. Notwithstanding this, the contractor shall inform the tree owner that he is required to clear the tree, and shall obtain the owner’s confirmation that he has five FEA his consent to remove the tree, prior to proceeding with cutting the tree.
- viii) **Fires** – No fires are to be lit at jobsites for the purpose of clearing vegetation or vegetation debris.
- ix) **Village Protocols** – the contractor shall comply with protocols involved in working on land owned by Indigenous Fijians to ensure smooth work progress.
- x) **Damage to property** – The Contractor shall ensure that there is no damage to roadways, footpaths, drains, water-courses, properties and other services. The Contractor shall make good to the satisfaction to the owner any damage caused by the contractor.
- xi) **Portable signboards** - Portable signboards must be placed at 50m intervals.
- xii) **Traffic and Pedestrian Control** – The Contractor shall ensure that there is minimum disruption to the flow of traffic and pedestrian. FEA procedures on Traffic Control and Pedestrian Control shall be diligently exercised.
- xiii) **Worksite protection** - Bollards/cone must be placed at 10m intervals.
- xiv) **Jobsite Safety Assessment** - Contractor to carry out Jobsite Safety Assessment daily, and as and when required, and submit these to FEA on a weekly basis.
- xv) **Contractor HSE Compliance** - Contractor shall comply with FEA/Contractor HSE Manual at all times.
- xvi) **Defects Rectification** – The contractor shall rectify all defects within seven (7) days as per contract.
- xvii) **Project completion** – The contractor shall complete work on time as per contract.
- xviii) **Project progress** – If the Contractor fails to proceed with the works with reasonable diligence or suspends the works or refuses to comply with the reasonable direction from FEA by reason of which the works are materially affected and any such default continues for a period of seven (7) days after the issue of written notice, FEA may itself call any other person to complete the works at the Contractor’s risk and expense.
- xix) **FEA/Contractor HSE Manual** - Contractor shall comply with FEA/Contractor HSE Manual at all times.



List of Contractor's employees and occupations enlisted for Vegetation Management

Occupations may possibly be: Supervisor; Assistant Supervisor; Driver; Chainsaw Operator; Labour; Etc.

No.	Name Of Employee	FEA VM Training ID Card No.#	FNPF Number	Position
1.				
2.				
3.				
4.				
5.				
6.				
7.				
8.				
9.				
10.				

Contractors are to fill and submit the attached FEA HSE Document Form number HSE41C01 together with the bid documents. Failure to do so may result in the disqualification of the bid.

**TENDER SUBMISSION CHECK LIST**

***The Bidders must ensure that the details and documentation mention below must submitted as part of their tender Bid***

Tender Number \_\_\_\_\_

Tender Name \_\_\_\_\_

1. Full Company Name: \_\_\_\_\_

**(Attach copy of Registration Certificate)**

2. Director/Owner(s): \_\_\_\_\_

3. Postal Address: \_\_\_\_\_

4. Phone Contact: \_\_\_\_\_

5. Fax Number: \_\_\_\_\_

6. Email address: \_\_\_\_\_

7. Office Location: \_\_\_\_\_

8. TIN Number: \_\_\_\_\_

**(Attach copy of the VAT/TIN Registration Certificate - Local Bidders Only)**

9. Company Registration Number: \_\_\_\_\_

**(Attach copy of the Business License)**

10. FNPf Employer Registration Number: \_\_\_\_\_

**(For Local Bidders only)**

11. Contact Person: \_\_\_\_\_

I declare that all the above information is correct.

Name: \_\_\_\_\_

Position: \_\_\_\_\_

Sign: \_\_\_\_\_

Date: \_\_\_\_\_



## **Submission of Tender**

Two (2) hard copies of the tender bids in sealed envelope shall be deposited in the tender box located at the Supply Chain Office at the FEA Head Office, 2 Marlow Street, Suva, Fiji.

Courier charges for delivery of Tender Document must be paid by the bidders.

This tender closes at **4:00 p.m. (16.00hrs Fiji time) on Wednesday 19<sup>th</sup> July, 2017.**

Each tender shall be sealed in an envelope with:

The envelope bearing only the following marking:

**TENDER No. MR 129/2017 – Vegetation Management for Distribution Power Lines in the Western Division**

**The Secretary, Tender Committee  
Fiji Electricity Authority  
Supply Chain Office  
Private Mail Bag, Suva**

It must also indicate the name and address of the tenderer on the reverse of the envelope.

All late tenders, unmarked Envelopes and envelopes without bidder's name and address on the reverse on the envelope will be returned to the Tenderers unopened. (Bids via e-mail or fax will not be considered).

The bidders must ensure that their bid is inclusive of all Taxes payable under Fiji Income Tax Act and must have the most current Tax Compliance Certificate.

For further information or clarification please contact our Supply Chain Office on phone (+679) 3224360 or (+679) 9991587.