

Energy Fiji Limited



Tender Document

Tender No. : MR 82/2025

Phase 2 - Re-installation and Commissioning of
EFL's Wainisavulevu Rubber Dam

Table of Content

| | |
|--|-----------|
| 1.0 INVITATION FOR TENDERS | 5 |
| 2.0 INSTRUCTION TO BIDDERS | 6 |
| 2.1 ELIGIBLE BIDDERS | 6 |
| 2.2 ELIGIBLE MATERIALS, EQUIPMENT AND SERVICES | 6 |
| 2.3 ONE BID PER BIDDER | 6 |
| 2.4 COST OF BIDDING | 6 |
| 2.5 SITE VISITS | 6 |
| 2.6 CONTENTS OF THE BIDDING DOCUMENTS | 7 |
| 2.7 CLARIFICATION OF BIDDING DOCUMENTS | 7 |
| 2.8 AMENDMENT OF BIDDING DOCUMENT | 7 |
| 2.9 LANGUAGE OF BID | 7 |
| 2.10 BID PRICES | 8 |
| 2.11 BID CURRENCIES | 8 |
| 2.12 BID VALIDITY | 8 |
| 2.13 FORMAT AND SIGNING OF BIDS | 8 |
| 2.14 DEADLINE FOR SUBMISSION OF BIDS | 8 |
| 2.15 LATE BIDS | 8 |
| 2.16 MODIFICATION AND WITHDRAWAL OF BIDS | 8 |
| 2.17 REJECTION OF ONE OR ALL BIDS | 9 |
| 2.18 PROCESS TO BE CONFIDENTIAL | 9 |
| 2.19 CLARIFICATION OF BIDS | 9 |
| 2.20 PRELIMINARY EXAMINATION | 9 |
| 3.0 TECHNICAL SPECIFICATION | 10 |
| 3.1 GENERAL INFORMATION | 10 |
| 3.1.1 PRELIMINARY AND GENERAL CONDITIONS | 10 |
| 3.1.2 SITE LOCATION | 10 |
| 3.1.3 ENERGY FIJI LIMITED | 10 |
| 3.1.4 BUILDING CONDITIONS | 10 |
| 3.1.5 WORK PLAN | 10 |
| 3.1.6 SITE SAFETY MANAGEMENT SYSTEM | 10 |
| 3.1.7 ENVIRONMENTAL CONTROL | 10 |
| 3.1.8 PROTECTION OF PEOPLE AND PROPERTY | 10 |
| 3.1.9 DURATION OF WORK | 11 |
| 3.1.10 STORAGE OF MATERIALS AND EQUIPMENT'S | 11 |
| 3.1.11 DAILY DIARY REPORTS | 11 |
| 3.1.12 CARE OF THE WORKS | 11 |
| 3.1.13 CLEARING AWAY | 11 |
| 3.1.14 TOBACCO/ALCOHOL/DRUG FREE ENVIRONMENT | 11 |
| 3.2 INSURANCES | 11 |
| 3.3 DRAWING | 12 |

| | | |
|------------|---|-----------|
| 3.3.1 | PLAN VIEW OF CONTROL ROOM LAYOUT | 12 |
| 4.0 | SCOPE OF WORK | 13 |
| 4.1 | SCOPE | 13 |
| 4.2 | TECHNICAL DETAILS | 13 |
| 4.2.1 | AIR COMPRESSOR SYSTEM (DRAWING NO. WW 03 400) | 13 |
| 4.2.2 | PNEUMATIC CONTROL SYSTEM (DRAWING NO. WW 03 500) | 13 |
| 4.2.3 | CLEANING OF RUBBER DAM PARTS AND RUST PROTECTION | 14 |
| 4.2.4 | RUBBER COMPONENTS | 14 |
| 4.2.5 | STEEL COMPONENTS | 15 |
| 4.2.6 | ADDITIONAL ITEMS REQUIRED FOR ASSEMBLY OF RUBBER DAM | 15 |
| 5.0 | PRICE SCHEDULE | 16 |
| 5.1 | OVERALL PRICE SCHEDULE | 16 |
| 5.2 | BREAKDOWN OF PRICES FOR SUPPLY OF AIR COMPRESSOR SYSTEM COMPONENTS: | 17 |
| 5.3 | BREAKDOWN OF PRICES FOR SUPPLY OF PNEUMATIC CONTROL SYSTEM COMPONENTS: | 17 |
| 5.4 | BREAKDOWN OF PRICES FOR CLEANING AND PAINTING: | 18 |
| 5.5 | BREAKDOWN OF PRICES FOR RUBBER COMPONENTS: | 18 |
| 5.6 | BREAKDOWN OF PRICES FOR STEEL COMPONENTS: | 18 |
| 5.7 | BREAKDOWN OF PRICES FOR SUPPLY OF ADDITIONAL ITEMS: | 19 |
| 5.8 | COMPLIANCE CHECKLIST DECLARATION | 20 |
| 5.9 | TENDER CHECK LIST | 21 |
| 6.0 | TENDER FORM | 22 |
| 7.0 | SUBMISSION TO TENDER | 23 |

List of Tables:

| | |
|--|----|
| Table 1: Air Compressor System Components. | 13 |
| Table 2: Pneumatic Control System Components..... | 13 |
| Table 3: Components for Cleaning and painting. | 14 |
| Table 4: Rubber Components. | 14 |
| Table 5: Steel Components. | 15 |
| Table 6: Additional Items. | 15 |
| Table 7: Breakdown for Supply of Air Compressor System components..... | 17 |
| Table 8: Breakdown of Supply of Pneumatic Control Components. | 17 |
| Table 9: Breakdown of prices for Cleaning and Painting. | 18 |
| Table 10: Breakdown of prices for Rubber Components..... | 18 |
| Table 11: Breakdown of prices for Steel Components..... | 18 |
| Table 12: Breakdown of prices for Supply of Additional items. | 19 |

1.0 INVITATION FOR TENDERS

Energy Fiji Limited is inviting bids for Phase 2 - Re-installation and Commissioning of EFL's Wainisavulevu Rubber Dam. The Detailed scope of works listed in the following pages.

All tenders shall submit all documents required including pricing as per price schedule template.

During evaluation of tenders, the Authority will invite a tenderer or tenderers for discussions, presentations and necessary clarification before awarding of the contract

The tender submissions close on the 2/04/25

2.0 INSTRUCTION TO BIDDERS

2.1 Eligible Bidders

- 2.1.1. This invitation is open to all Bidders who have sound financial background, and have previous experience in installation of rubber dams, pipe fabrication works, installation of compressor systems and pneumatic control panels.
- 2.1.2. Bidders shall provide such evidence of their continued eligibility satisfactory to EFL as EFL shall reasonably request.
- 2.1.3. Bidders shall not be under a declaration of ineligibility for corrupt or fraudulent practice.

2.2 Eligible Materials, Equipment and Services

- 2.2.1. The materials, equipment, and services to be supplied under the Contract shall have their origin from reputable companies as specified by EFL and from various countries and all expenditures made under the Contract will be limited to such materials, equipment, and services. Upon request, bidders may be required to provide evidence of the origin of materials, equipment, and services.
- 2.2.2. For purposes of this Contract, "services" means the works and all project-related services including design services.
- 2.2.3. For purposes of this Contract, "origin" means the place where the materials and equipment are mined, grown, produced or manufactured, and from which the services are provided. Materials and equipment are produced when, through manufacturing, processing, substantial, or major assembling of components, a commercial recognized product results that is substantially different in basic characteristics or in purpose or utility from its components.
- 2.2.4. The materials, equipment and services to be supplied under the Contract shall not infringe or violate any industrial property or intellectual property rights or claim of any third party.

2.3 One bid per Bidder

- 2.3.1. Each bidder shall submit only one bid. A bidder who submits or participates in more than one bid will cause all those bids to be rejected.

2.4 Cost of Bidding

- 2.4.1. The bidder shall bear all costs associated with the preparation and submission of its bid and EFL will in no case be responsible or liable for those costs.

2.5 Site Visits

- 2.5.1. Site visit will be on Wednesday 26/02/2025 at 10.00am at EFL Wainisavulevu Weir. Detail and clarification will be address.

2.6 Contents of the Bidding Documents

- 2.6.1. The bidder is expected to examine carefully the contents of this Bidding document. Failure to comply with the requirements of bid submission will be at the bidder's own risk. Bids that are not substantially responsive to the requirements of the bidding documents will be rejected.
- 2.6.2. The following are the mandatory submission of a successful tender bid;
- Pricing Schedule
 - Program of Works
 - Total number of workers to be on site.
 - Welder names and certifications.
 - Company Profile (Max 2 pages in standard A4)
 - Work History - Project/ Work done with referee, EFL work history.
 - Company background
 - Bidder available resources e.g. Manpower, Machines & Equipment.
 - OHS Policies or Plan
 - Product specifications and data sheets of items to be installed.
 - Fiji Revenue & Customs Service (FRCA) compliance
 - Fiji National Provident Fund (FNPF) compliance
 - Signed checklist declaration (Appendix 5.1)

Failure to submit required documents may affect bid compliance even make it non-compliance.

2.7 Clarification of Bidding Documents

- 2.7.1. A prospective bidder requiring any clarification of the bidding documents may notify EFL in writing by email addressed to:

Jitendra Reddy
Manager Procurement, Inventories & Supply Chain
2 Marlow Street,
Suva, Fiji
Phone: +679 3224 360
Email: JReddy@efl.com.fj

- 2.7.2. EFL will respond to any request for clarification that it receives earlier than 5 days prior to the deadline for submission of bids.

2.8 Amendment of Bidding Document

- 2.8.1. At any time prior to the deadline for submission of bids, EFL may, for any reason, whether at its own initiative or in response to a clarification requested by a prospective bidder, modify the bidding documents by issuing addenda.

2.9 Language of Bid

- 2.9.1. The bid, and all correspondence and documents related to the bid, exchanged between the bidder and the EFL shall be written in the English language.

2.10 Bid Prices

- 2.10.1. Unless specified otherwise, Bidders shall quote for the entire facilities on a "single responsibility" basis such that the total bid price covers all the Supplier's obligations mentioned in or to be reasonably inferred from the bidding documents in respect of the design, manufacture, including procurement and subcontracting (if any), testing and delivery.
- 2.10.2. Bidders shall give a breakdown of the prices in the manner and detail called for in this bidding document, or any issued addenda.

2.11 Bid Currencies

- 2.11.1. Prices shall be quoted in a single currency only.

2.12 Bid Validity

- 2.12.1. Bids shall remain valid for a period of 120 days from the date of Deadline for Submission of Bids specified in Sub-Clause 2.15.

2.13 Format and Signing of Bids

- 2.13.1. The bidder shall provide one electronic copy of the Technical and Financial proposals on EFL's electronic tender hosting website; <https://www.tenderlink.com/efl>
- 2.13.2. The bid shall contain no alterations, omissions or additions, except those to comply with instructions issued by EFL, or as necessary to correct errors made by the bidder, in which case such corrections shall be initialled by the person or persons signing the bid.

2.14 Deadline for Submission of Bids

- 2.15.1. Soft Copy of Bids must be received by EFL via Tender Link no later than 1600 hours (Fiji Time) 2/04/25.
- 2.15.2. EFL may, at its discretion, extend the deadline for submission of bids by issuing an addendum, in which case all rights and obligations of EFL and the bidders previously subject to the original deadline will thereafter be subject to the deadlines extended.

2.15 Late Bids

- 2.16.1. Any bid received by EFL after the deadline for submission of bids prescribed above will be rejected.

2.16 Modification and Withdrawal of Bids

- 2.17.1. The bidder may modify or withdraw its bid after bid submission, provided that written notice of the modification or withdrawal is received by EFL prior to the deadline for submission of bids.
- 2.17.2. No bid may be modified by the bidder after the deadline for submission of bids.

2.17 Rejection of one or all Bids

- 2.18.1. EFL reserves the right to accept or reject any bid, and to annul the bidding process and reject all bids, at any time prior to award of Contract, without thereby incurring any liability to the affected bidder or bidders or any obligation to inform the affected bidder or bidders of the grounds for the rejection.

2.18 Process to be Confidential

- 2.19.1. Information relating to the examination, clarification, evaluation and comparison of bids and recommendations for the award of a contract shall not be disclosed to bidders or any other persons not officially concerned with such process.
- 2.19.2. Any effort by a bidder to influence EFL's processing of bids or award decisions may result in the rejection of the bidder's bid.
- 2.19.3. Lowest bid will not necessarily be accepted as successful bid.

2.19 Clarification of Bids

- 2.20.1. To assist in the examination, evaluation and comparison of bids, EFL may, at its discretion, ask any bidder for clarification of its bid. The request for clarification and the response shall be in writing or by fax, but no change in the price or substance of the bid shall be sought, offered or permitted except as required to confirm the correction of arithmetic errors discovered by EFL in the evaluation of the bids in.

2.20 Preliminary Examination

- 2.21.1. Energy Fiji Limited will examine the tenders to determine whether they are complete, whether any computational errors have been made, whether the documents have been properly signed, and whether the tenders are generally in order.
- 2.21.2. Arithmetical errors will be rectified on the following basis. If there is a discrepancy between the unit price and the total price that is obtained by multiplying the unit price and quantity, the unit price shall prevail, and the total price shall be corrected. If the tenderer does not accept the correction of the errors, its tender will be rejected. If there is a discrepancy between words and figures, the amount in words will prevail.
- 2.21.3. Energy Fiji Limited may waive any minor informality or non-conformity or irregularity in a tender which does not constitute a material deviation, provided such waiver does not prejudice or affect the relative ranking of any tenderer.
- 2.21.4. Prior to the detailed evaluation, pursuant to Clause 21, Energy Fiji Limited will determine the substantial responsiveness of each tender to the tender document. For purposes of these paragraphs, a substantially responsive tender is one, which conforms to all the terms and conditions of the tender document without material deviation Energy Fiji Limited's determination of a tender's responsiveness is to be based on the contents of the tender itself without recourse to extrinsic evidence.
- 2.21.5. If a tender is not substantially responsive, it will be rejected by Energy Fiji Limited and may not subsequently be made responsive by the tenderer by correction of the nonconformity.

3.0 TECHNICAL SPECIFICATION

3.1 General Information

3.1.1 Preliminary and General Conditions

The contractor shall furnish all labour, equipment, transportation and services as necessary to complete all projected work included in this specifications.

3.1.2 Site Location

EFL Wainisavulevu Weir

3.1.3 Energy Fiji Limited

The contractor shall at times comply with all Energy Fiji Limited's HSE Regulations currently in force.

3.1.4 Building Conditions

The contractor is advised to visit and assess the site and existing premises prior to tendering, as no claim will be allowed on the grounds of ignorance of the conditions existing.

3.1.5 Work Plan

The contractor shall prepare a Work Methodology, Work Programme, Work Safety Plan/Risk Assessment Plan in accordance and shall submit the plan to the property officer for his approval before commencing with work on the site.

3.1.6 Site Safety Management System

The contractor shall establish and maintain a Site Safety Management that ensures the safety of all persons on the site in accordance with the requirements of the Energy Fiji Limited Occupational Health and Safety Policy and the Health and Safety at Work Act, 1996 requiring strict compliance by the parties here to. The Contractor is to obtain all approvals from Ministry of Labour for any scaffolding to be used on the site. All PPE's and other safety equipment's will be checked by EFL's Health and Safety Department (HSE) to confirm if they are in compliance with the relevant current safety standards. No work shall commence prior to approvals given from EFL's HSE Department.

EFL will carry out an induction for the contractor and its members to familiarize with the Energy Fiji Limited Occupational Health and Safety Policy.

3.1.7 Environmental Control

Comply with all environmental protection provisions in the contract and the requirements of any statute, by law, standard and the like related to environmental protection.

3.1.8 Protection of People and Property

The contractor shall keep all persons (workers) under control and within the boundaries of the site. He will be held responsible for the care of the existing premises and works generally until completion.

3.1.9 **Duration of Work**

The expected duration for the Installation and commissioning shall be eight (8) weeks.

3.1.10 **Storage of Materials and Equipment's**

Materials and equipment's stored on site must not pose any danger to property and minimize hazards to persons, materials and equipment. Keep storage area neat and tidy.

Take proper precautions to keep poisonous and other injurious substance in place secured against access by unauthorised person.

3.1.11 **Daily Diary Reports**

Progress reports shall be submitted daily on the forms provided by the property officer.

3.1.12 **Care of the Works**

The contractor shall keep all persons under control and within the boundaries of the site. He will be held responsible for the care of the existing premises and works generally until completion.

3.1.13 **Clearing Away**

The contractor shall take the removed sediments and debris (if any) to a location, which will be advised in the **site visit**.

3.1.14 **Tobacco/Alcohol/Drug Free Environment**

EFL maintains tobacco, alcohol and drug free environment. Any personnel of the contractor found violating the policy would be requested to remove the product and themselves from the sites. Offensive language or actions are not acceptable. The EFL shall have the absolute right to require replacement of any employee the EFL deems objectionable to work on EFL premises.

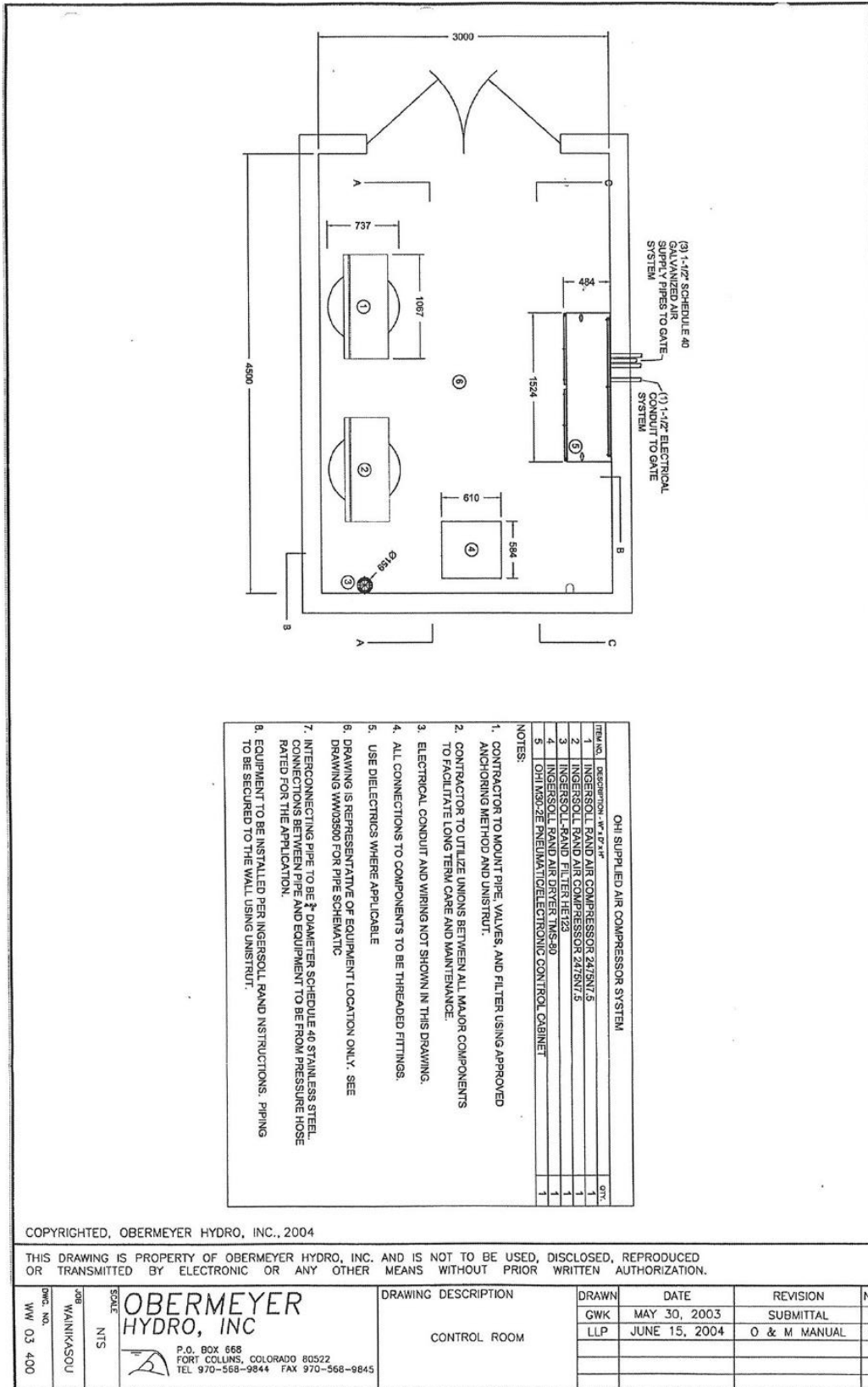
3.2 **Insurances**

The Contractor shall be solely responsible for all relevant insurance covers for person, tools, plants and equipment involved in carrying out the Works. The Contractor must obtain and maintain all relevant insurance covers at all material times sufficient to cover any loss or costs that may be incurred which the Contractor is liable for in connection with the duration and Scope of Works, including:

- Contractors All Risk
- Public Liability

3.3 Drawing

3.3.1 Plan View of Control Room Layout



4.0 SCOPE OF WORK

The Contractor shall provide all labour, tools and equipment necessary for installation and commissioning of the EFL's Wainisavulevu Rubber Dam – Phase 2.

4.1 Scope

1. Supply and installation of major components for Air Compressor System for Control Room as listed in *Table 1*.
2. Supply and installation of all components for Pneumatic Control System as listed in *Table 2*.
3. Supply, fabrication and installation of pneumatic pipes and fittings between all components for the Air compressor system and Pneumatic Control System, including connections to the air supply pipes and electrical conduit pipes.
4. Supply and installation of 2x inclinometers (4-20mA Signal, Pressure range/Span ± 70 degrees, Three (3) wire 18 gauge shielded).
5. Cleaning of rubber components, also sand blasting and painting of steel components listed in *Table 3*.
6. Supply of all rubber components listed in *Table 4*.
7. Supply, fabricate, sand blast and painting of all steel components listed in *Table 5*.
8. Supply of all additional items required for assembly of Rubber Dam listed in *Table 6*.
9. Cartage, assembly and re-Installation of all Rubber Dam components on weir crest.
10. Testing and commissioning of Air compressor system with Rubber dam.

4.2 Technical Details

4.2.1 Air Compressor System (Drawing No. WW 03 400)

Tabulated below is a description, part number and quantity of all major components required to be supplied by bidders for air compressor system:

Table 1: Air Compressor System Components.

| Item No. | Description | Serial/Model Number | Qty |
|----------|-------------------------------|---------------------|-----|
| 1 | Ingersoll Rand Air Compressor | 2475N7.5 | 2 |
| 2 | Ingersoll Rand Filter | HE123 | 1 |
| 3 | Ingersoll Rand Air Dryer | TMS-80 | 1 |

4.2.2 Pneumatic Control System (Drawing No. WW 03 500)

Tabulated below is a description, part number and quantity of all components required to be supplied by bidders for pneumatic control system:

Table 2: Pneumatic Control System Components.

| Item No. | Code in Drawing | Description | Serial/Model Number or Details | Qty |
|----------|-----------------|------------------------------|--------------------------------|-----|
| 1 | AC-1 | Pilot accumulator | | 1 |
| 2 | PG-T | Receiver Tank Pressure Gauge | | 2 |
| 3 | PG-1 | Inlet Pressure Gauge | | 1 |
| 4 | PG-2 | Set Pressure Gauge | | 2 |
| 5 | PG-3 | Bladder Pressure Gauge | | 2 |
| 6 | CV-1 | Ball Cone Check Valve 1 | PN6 | 1 |

| | | | | |
|----|------|-----------------------------------|---|---|
| 7 | CV-2 | Ball Cone Check Valve 2 | PN6 | 1 |
| 8 | CV-3 | Ball Cone Check Valve 3 | PN10 | 1 |
| 9 | PR-1 | Set Pressure Regulator | To be set approx. 20psi | 2 |
| 10 | BP-1 | Filter/Dryer Bypass Ball Valve | PN10 | 1 |
| 11 | BP-2 | Ball Valve Inflate | PN6 | 2 |
| 12 | BP-3 | Ball Valve Deflate | PN6 | 2 |
| 13 | BP-4 | Emergency Air Ball Valve | PN10 | 1 |
| 14 | SV-1 | Pilot Solenoid Inflate | | 2 |
| 15 | SV-2 | Pilot Solenoid Deflate | | 2 |
| 16 | SV-3 | Pilot Solenoid System Equilibrium | | 1 |
| 17 | PT-1 | Bladder Pressure Transducer | 4-20mA signal, Pressure Range 0-30 psi, Three (3) Wire 18 Gauge shielded. | 2 |
| 18 | RV-1 | Bladder Pressure Relief Valve | | 2 |
| 19 | RV-2 | Tank Pressure Relief Valve | | 2 |
| 20 | PS-1 | Low Pilot Pressure Switch | | 1 |
| 21 | PS-2 | Low Inlet Pressure Switch | | 1 |
| 22 | IS-1 | Component Isolation Ball Valve | PN10 | 6 |

4.2.3 Cleaning of Rubber dam parts and rust protection

Tabulated below is a description, parts and quantities of all rubber components that require cleaning and the steel components are to be sand blasted and painted.

Table 3: Components for Cleaning and painting.

| Item No. | Description | Qty | Material |
|----------|--|------|----------|
| 1 | Gate Panels | 15 | Steel |
| 2 | Shield plate (for pipe before access ladder) | 1 | Steel |
| 3 | Clamp Casting | 109 | Steel |
| 4 | Hinge Retainer A | 98 | Steel |
| 5 | Air Bladders | 16 | Rubber |
| 6 | Hinge Flap | 14 | Rubber |
| 7 | Chase threads for 5/8" 11tpi UNC studs x 78 qty for each gate panel | 1092 | S/Steel |
| 8 | Chase internal threads for 1/2"- 13tpi UNC holes x 4 qty for each gate panel | 56 | Steel |

4.2.4 Rubber Components

Tabulated below is a description, material, dimensions and quantity of all rubber components required to be supplied:

Table 4: Rubber Components.

| Item No. | Description | Qty | Dimensions | Material |
|----------|-------------------|------|---------------------------|----------------|
| 1 | Hinge Flap | 16 | | As per samples |
| 2 | Inter panel seal | 14 | | As per samples |
| 3 | Exxpro Rubber | 100m | 1.5mm thick x 800mm width | As per samples |
| 4 | Restraining Strap | 30 | | As per samples |

| | | | | |
|---|---------------------|---|----------------------|-----------------------|
| 5 | J Seal | 2 | | As per samples |
| 6 | Teflon Plate | 4 | 6mm x 125mm x 1850mm | Teflon/UHMW Polythene |
| 7 | Right Abutment seal | 2 | | As per samples |
| 8 | Left Abutment seal | 2 | | As per samples |

4.2.5 **Steel Components**

Tabulated below is a description, material, dimensions and quantity of all steel components required to be supplied, fabricated, sand blasted and painted:

Table 5: Steel Components.

| Item No. | Description | Qty | Drawing # | Material |
|----------|---------------------------|-----|-----------|-----------------------|
| 1 | Hinge Retainer A | 50 | WW03151 | ASTM A36 \ Mild Steel |
| 2 | Hinge Retainer B | 28 | WW03151 | ASTM A36 \ Mild Steel |
| 3 | Web Retainer (12mm thick) | 28 | WW03152 | ASTM A36 \ Mild Steel |
| 4 | Splitter Bar | 14 | WW03154 | ASTM A36 \ Mild Steel |
| 5 | Restraining Strap Clamp | 56 | WW03155 | ASTM A36 \ Mild Steel |
| 6 | Inner Panel Abutment | 1 | WW03159 | ASTM A36 \ Mild Steel |

4.2.6 **Additional items required for assembly of Rubber Dam**

Tabulated below is a description, material, dimensions and quantity of all additional items required to be supplied:

Table 6: Additional Items.

| Item No. | Description | Qty | Dimensions/Comments | Material |
|----------|---|------|--|----------|
| 1 | M30 washer | 217 | Standard m30 washers | S/S |
| 2 | M30 Nut | 217 | M30 x 3.5mm Pitch | S/S |
| 3 | M20 washer | 56 | Standard M20 Washer | S/S |
| 4 | M20 nut | 56 | M20 x 2.5mm Pitch | S/S |
| 5 | 1/2" – 13tpi UNC Bolts | 56 | L-25mm | S/S |
| 6 | 5/8" – 11tpi UNC nuts | 1092 | Standard 5/8" nuts | S/S |
| 7 | 5/8" washers | 1092 | Standard 5/8" washers | S/S |
| 8 | M22 bolt and nut | 56 | L-65mm | S/S |
| 9 | Silicon Adhesive Sealant | TBC | For sealing off gaps between air bladders and between hinge and inter panel seals. | |
| 10 | Tnemec Series 66 Hi-Build Epoxoline or Equivalent | TBC | Epoxy protective coating of all steel components | |

Note:

1. All detailed drawings will be provided during site visit.
2. Test pressure and test procedure will be provided during site visit.
3. The pipe size, route and total length of interior piping and quantity of fittings to be confirmed during site visit.
4. Ball valves sizes to match confirmed pipe size at point of installation.
5. For steel components, sand blast in accordance with SSPC-SP10 standards (Near-white metal blast cleaning)
6. Paint with 9-Mils (Dry) Tnemec Series 66 Hi-Build Epoxoline or approved equivalent.

5.0 PRICE SCHEDULE

Phase 2 - Re-installation and Commissioning of EFL's Wainisavulevu Rubber Dam

5.1 Overall Price Schedule

| Item | Item Description | Sub Total Price |
|------------------|---|-----------------|
| 1 | Supply of major components for Air Compressor System for Control Room (Breakdown in <i>Table 7</i>). | |
| 2 | Supply of all components for Pneumatic Control System (Breakdown in <i>Table 8</i>). | |
| 3 | Installation of major components for Air Compressor System for Control Room. | |
| 4 | Installation of all components for Pneumatic Control System. | |
| 5 | Supply, fabrication and installation of pneumatic pipes and fittings between all components for the Air compressor system and Pneumatic Control System, including connections to the air supply pipes and electrical conduit pipes. | |
| 6 | Supply and installation of 2x Inclinometers. | |
| 7 | Cleaning of rubber components, also sand blasting and painting of all steel components (Breakdown in <i>Table 9</i>). | |
| 8 | Supply of all rubber components (Breakdown in <i>Table 10</i>). | |
| 9 | Supply, fabricate, and sand blast and painting of all steel components (Breakdown in <i>Table 11</i>). | |
| 10 | Supply of all additional items for assembly of rubber dam (Breakdown in <i>Table 12</i>). | |
| 11 | Cartage, assembly and re-Installation of all Rubber Dam components. | |
| 12 | Testing and commissioning of Rubber Dam | |
| 13 | Completion of retention period | |
| TOTAL VEP | | |
| TOTAL VIP | | |

5.2 Breakdown of prices for Supply of Air compressor System components:

Table 7: Breakdown for Supply of Air Compressor System components.

| Item No. | Description | Serial/Model Number | Qty | Unit Price | Subtotal |
|----------|-------------------------------|---------------------|-----|------------------|----------|
| 1 | Ingersoll Rand Air Compressor | 2475N7.5 | 2 | | |
| 2 | Ingersoll Rand Filter | HE123 | 1 | | |
| 3 | Ingersoll Rand Air Dryer | TMS-80 | 1 | | |
| | | | | Total VEP | |
| | | | | Total VIP | |

5.3 Breakdown of prices for Supply of Pneumatic Control System components:

Table 8: Breakdown of Supply of Pneumatic Control Components.

| Item No. | Description | Qty | Unit Price | Subtotal |
|----------|-----------------------------------|-----|------------------|----------|
| 1 | Pilot accumulator | 1 | | |
| 2 | Receiver Tank Pressure Gauge | 2 | | |
| 3 | Inlet Pressure Gauge | 1 | | |
| 4 | Set Pressure Gauge | 1 | | |
| 5 | Bladder Pressure Gauge | 1 | | |
| 6 | Ball Cone Check Valve 1 | 1 | | |
| 7 | Ball Cone Check Valve 2 | 1 | | |
| 8 | Ball Cone Check Valve 3 | 1 | | |
| 9 | Set Pressure Regulator | 2 | | |
| 10 | Filter/Dryer Bypass Ball Valve | 1 | | |
| 11 | Ball Valve Inflate | 2 | | |
| 12 | Ball Valve Deflate | 2 | | |
| 13 | Emergency Air Ball Valve | 1 | | |
| 14 | Pilot Solenoid Inflate | 2 | | |
| 15 | Pilot Solenoid Deflate | 2 | | |
| 16 | Pilot Solenoid System Equilibrium | 1 | | |
| 17 | Bladder Pressure Transducer | 2 | | |
| 18 | Bladder Pressure Relief Valve | 2 | | |
| 19 | Tank Pressure Relief Valve | 2 | | |
| 20 | Low Pilot Pressure Switch | 1 | | |
| 21 | Low Inlet Pressure Switch | 1 | | |
| 22 | Component Isolation Ball Valve | 6 | | |
| | | | Total VEP | |
| | | | Total VIP | |

5.4 Breakdown of prices for Cleaning and Painting:

Table 9: Breakdown of prices for Cleaning and Painting.

| Item No. | Description | Qty | Unit Price | Sub Total |
|----------|--|------|------------------|-----------|
| 1 | Gate Panels | 15 | | |
| 2 | Shield plate (for pipe before access ladder) | 1 | | |
| 3 | Clamp Casting | 109 | | |
| 4 | Hinge Retainer A | 98 | | |
| 5 | Air Bladders | 16 | | |
| 6 | Hinge | 14 | | |
| 7 | Chase threads for 5/8" 11tpi UNC studs x 78 qty for each gate panel | 1092 | | |
| 8 | Chase internal threads for 1/2"- 13tpi UNC holes x 4 qty for each gate panel | 56 | | |
| | | | Total VEP | |
| | | | Total VIP | |

5.5 Breakdown of prices for Rubber Components:

Table 10: Breakdown of prices for Rubber Components.

| Item No. | Description | Qty | Unit Price | Sub Total |
|----------|---------------------|------|------------------|-----------|
| 1 | Hinge Flap | 16 | | |
| 2 | Inter panel seal | 14 | | |
| 3 | Exxpro Rubber | 100m | | |
| 4 | Restraining Strap | 30 | | |
| 5 | J Seal | 2 | | |
| 6 | Teflon Plate | 4 | | |
| 7 | Right Abutment seal | 2 | | |
| 8 | Left Abutment seal | 2 | | |
| | | | Total VEP | |
| | | | Total VIP | |

5.6 Breakdown of prices for Steel Components:

Table 11: Breakdown of prices for Steel Components.

| Item No. | Description | Qty | Unit Price | Sub Total |
|----------|---------------------------|-----|------------------|-----------|
| 1 | Hinge Retainer A | 50 | | |
| 2 | Hinge Retainer B | 28 | | |
| 3 | Web Retainer (12mm thick) | 28 | | |
| 4 | Splitter Bar | 14 | | |
| 5 | Restraining Strap Clamp | 56 | | |
| 6 | Inner Panel Abutment | 1 | | |
| | | | Total VEP | |
| | | | Total VIP | |

5.7 Breakdown of prices for Supply of Additional items:

Table 12: Breakdown of prices for Supply of Additional items.

| Item No. | Description | Qty | Unit Price | Sub Total |
|----------|---|------|------------------|-----------|
| 1 | M30 washer | 217 | | |
| 2 | M30 Nut | 217 | | |
| 3 | M20 washer | 56 | | |
| 4 | M20 nut | 56 | | |
| 5 | 1/2" – 13tpi UNC Bolts | 56 | | |
| 6 | 5/8" – 11tpi UNC nuts | 1092 | | |
| 7 | 5/8" washers | 1092 | | |
| 8 | M22 bolt and nut | 56 | | |
| 9 | Silicon Adhesive Sealant | TBC | | |
| 10 | Tnemec Series 66 Hi-Build Epoxoline or Equivalent | TBC | | |
| | | | Total VEP | |
| | | | Total VIP | |

Notes:

1. Technical;
 - a. The bids must as per the Technical Specifications in the Tender Documents. Bids that do not conform to the technical Specification will be disqualified
 - b. Tenderers shall provide proof of successful completion within the stipulated delivery period of similar contracts undertaken in the past.
 - c. Documentary evidence to prove that the items offered comply with the Technical Specification must be provided.
 - d. Contractor to verify all drawing measurements onsite.
 - e. The Supplier/ Contractor shall provide warrants for Goods or services for provided unless stated otherwise.
 - f. EFL's Engineer or his representative shall have the right to inspect and/or to witness test the Goods at the factory or place of manufacture, for their conformity to the specifications
 - g. The Goods supplied under this Contract shall conform to the standards mentioned in the Technical Specifications
2. Financial;
 - a. In case of discrepancy between unit and total cost, the unit cost shall prevail
 - b. Any advance payment will require a bank guarantee. And this added cost will be beared by bidder
 - c. The currency used in the tender bid prices must be indicated in the tender bid
 - d. Prices shall be fixed during the Supplier's performance of the Contract and not subject to variation on any account.
 - e. EFL financial terms are applicable for these works.
 - f. For Foreign Supplier, any On-Shore work with incur a withholding Tax of 15% e.g. commissioning, training etc.
3. EFL Energy Fiji Limited uses Federation Internationale Des Ingenieurs Conseil (FIDIC) Contract template. General conditions of this contract shall be governed by it.
4. EFL have right to spilt award, tender may be awarded to multiple suppliers. In addition, Minimum order quantity (MOQ) will not be acceptable.
5. All clarification request must be sent 5 days prior to the deadline for submission of bids
6. Price Schedule must be typed and stamped on the bid submission.
7. Failure to submit required documents may affect bid compliance. Failure to submit mandatory items as stated in Compliance Checklist will result in non-compliance.
8. Contractor shall provide all materials, tools equipment and labour necessary to perform works.
9. A detailed work plan to be provided with expected date for the works.
10. Installation & Commissioning works must incorporate all cost incur for this activity e.g. travel, accommodation, visa etc.
11. All Sub-contractors to be used for any part of the works are to be declared.
12. Site Visit mandatory.

5.8 Compliance Checklist Declaration

I _____ of _____ located at _____ confirm that the bid submitted for the following tender MR 82/2025 : Phase 2 - Re-installation and Commissioning of EFL's Wainisavulevu Rubber Dam bid complies with the mandatory bidder submission as stated in Sub Clause 2.6;

| | Yes | No | Details |
|---|-----|----|---------|
| Commercial | | | |
| Price Schedule | | | |
| Company Profile outlining financial and technical capabilities | | | |
| Detailed Methodology | | | |
| Program [preferred Gantt Chart] (If Applicable) | | | |
| Payment Term | | | |
| Validity of bid [120 days required](Yes/No) | | | |
| Withholding Tax Inclusion (If Applicable) | | | |
| Technical | | | |
| Company's capabilities (resources, staff cv, etc.) | | | |
| Past Projects/ Experience submission for similar works. | | | |
| Welder Certifications and Names of welders | | | |
| Specifications/ Data sheets all components/items to be installed. | | | |
| Statement of Exclusion or Amendment for Tender Specification (if Any) | | | |
| | | | |

Note that these submissions are mandatory submission for a successful tender bid. This declaration must be signed and submit as well.

Name: _____

Position: _____

Company: _____

Sign Off: _____

Date: _____

5.9 Tender Check List

TENDER SUBMISSION CHECK LIST

The Bidders must ensure that the details and documentation mention below must be submitted as part of their tender Bid

Tender Number _____

Tender Name _____

1. Full Company / Business Name: _____

(Attach copy of Registration Certificate)

2. Director/Owner(s): _____

3. Postal Address: _____

4. Phone Contact: _____

5. Fax Number: _____

6. Email address: _____

7. Office Location: _____

8. TIN Number: _____

(Attach copy of the VAT/TIN Registration Certificate - Local Bidders Only (Mandatory))

9. FNPF Employer Registration Number: _____ **(For Local Bidders only) (Mandatory)**

10. **Provide a copy of Valid FNPF Compliance Certificate (Mandatory- Local Bidders only)**

11. **Provide a copy of Valid FRCS (Tax) Compliance Certificate (Mandatory Local Bidders only)**

12. Contact Person: _____

I declare that all the above information is correct.

Name: _____

Position: _____

Sign: _____

Date: _____

6.0 Tender Form

To: Jitendra Reddy
Manager Procurement, Inventories & Supply Chain
Energy Fiji Limited
2 Marlow Street,
Suva,
Fiji Islands
Phone: +679 3224 360
Email: JReddy@efl.com.fj

Sir,

1. Having examined the Tender Document, the receipt of which is hereby duly acknowledged, we, the undersigned, offer to supply
.....
(Description of Goods) in conformity with the said Tender Document for the sum
.....
..... (total tender amount in words and figures) or such other sums as may be ascertained in accordance with the Schedule of Prices attached herewith and made part of this Tender.
2. We undertake, if our Tender is accepted, to deliver the Goods in accordance with the delivery schedule specified in the Schedule of Requirements.
4. We agree to abide by this Tender for a period of 120days from the date fixed for Tender opening under Clause 19 of the Instructions to Tenderers, and it shall remain binding upon us and may be accepted at any time before the expiration of that period.
5. Until a formal Contract is prepared and executed, this Tender, together with your written acceptance thereof and your notification of award, shall constitute a binding Contract between us.
6. We understand that you are not bound to accept the lowest or any Tender you may receive.

Dated this: _____ day of _____ 202_.

[Signature] [In the capacity of]

Duly authorized to sign Tender for and on behalf of

7.0 Submission to Tender

Bidders are requested to upload electronic copies via Tender Link by registering their interest at: <https://www.tenderlink.com/efl>

Therefore, EFL will not accept any hard copy submission. Submission shall be through e-tender.

This tender closes at 4:00pm (1600hrs) on Wednesday 02nd April 2025.

For further information or clarification please contact our Supply Chain Office on phone (+679) 3224360 or (+679) 999 2400 or email us on tenders@efl.com.fj

The bidders must ensure that their bid is inclusive of all Taxes payable under Fiji Income Tax Act.

The lowest bid will not necessarily be accepted as the successful bid.

The Tender Bids particularly the “Price” must be typed and not hand written.

Tender Submission via email or fax will not be accepted.